

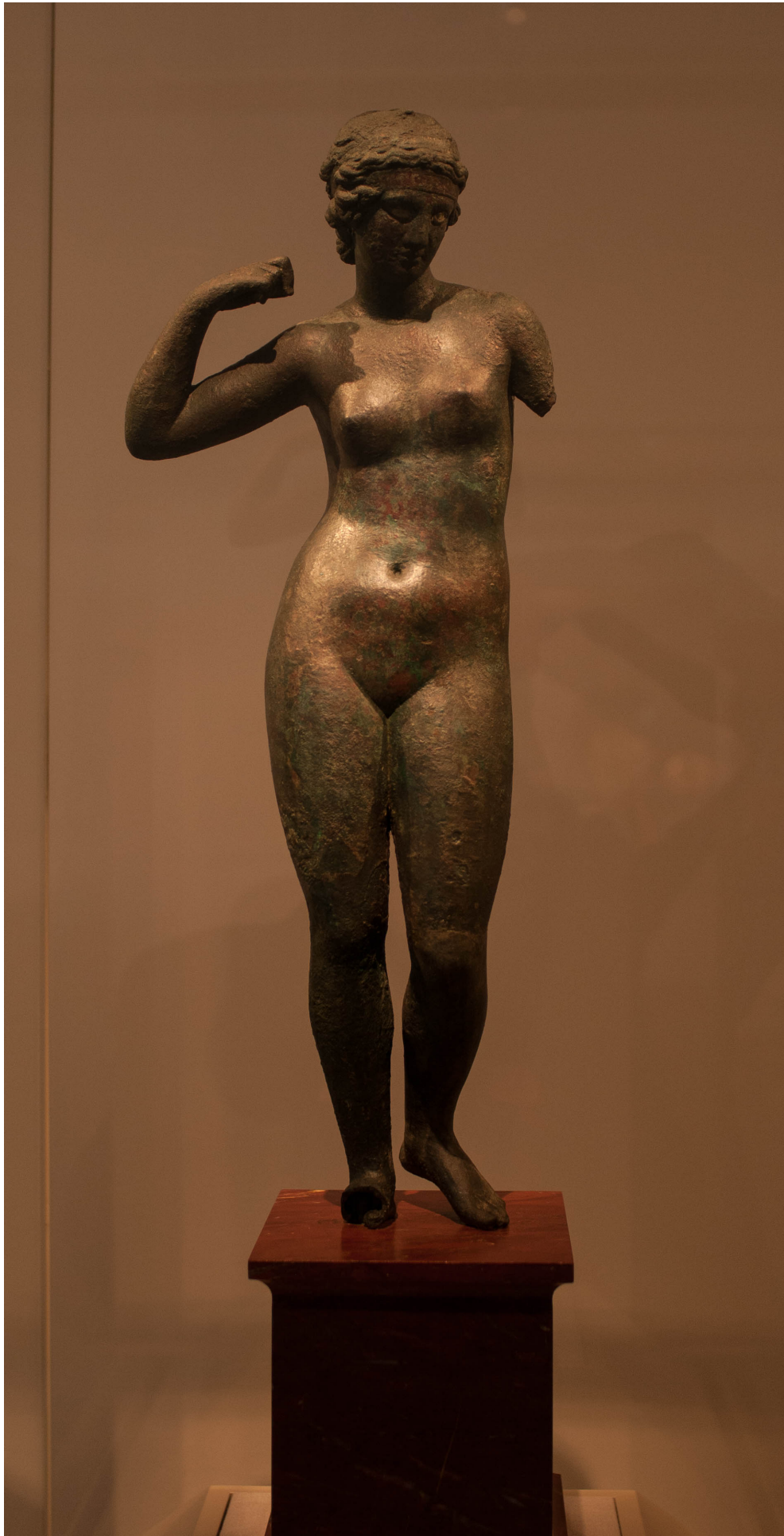
Figures From The Met

PHOTOGRAPHED BY NATTHEW ARCHAMBAULT

Take a walk with us through the Metropolitan Museum of Art drawing some of the most beautiful statues in the world. Cozy up with your sketchbook in a dark corner of the Met drawing statues bathed in dramatic light. Grab your pencils and get inspired to draw something amazing today.



DrawingTutorialsOnline















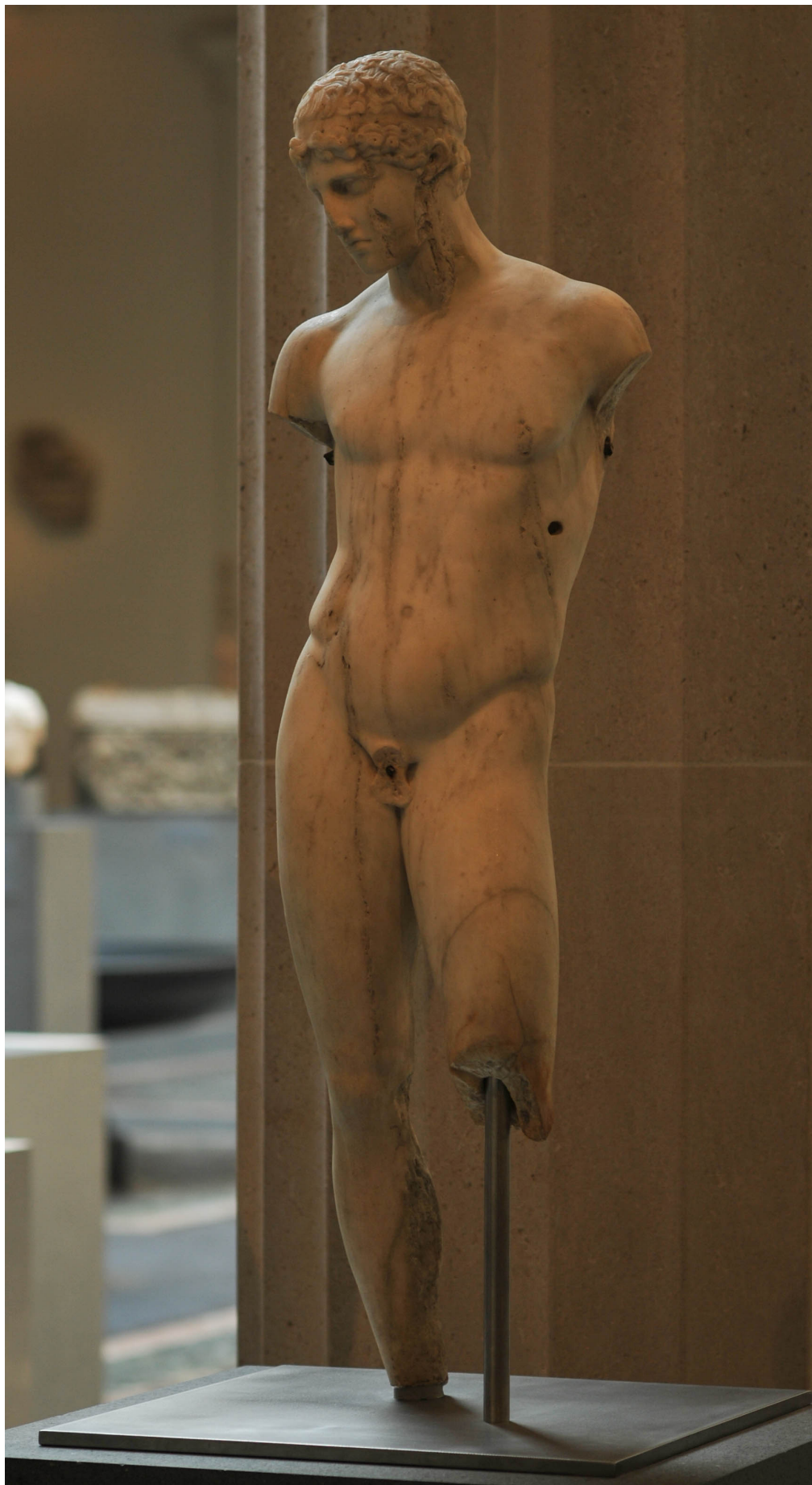
Marble torso of Eros
Roman, Imperial period, 1st or 2nd century A.D.
Adaptation of a Greek bronze statue representing the







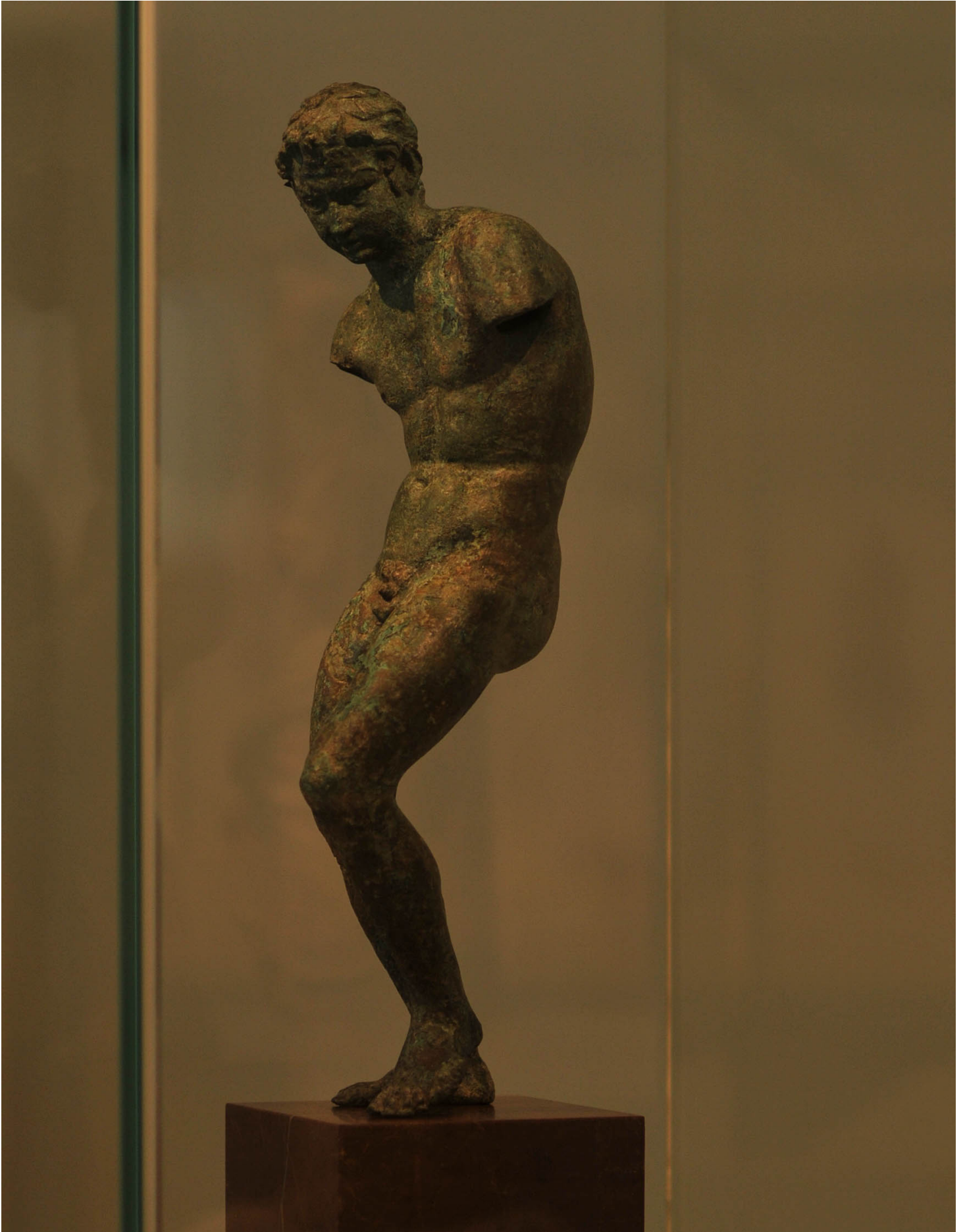


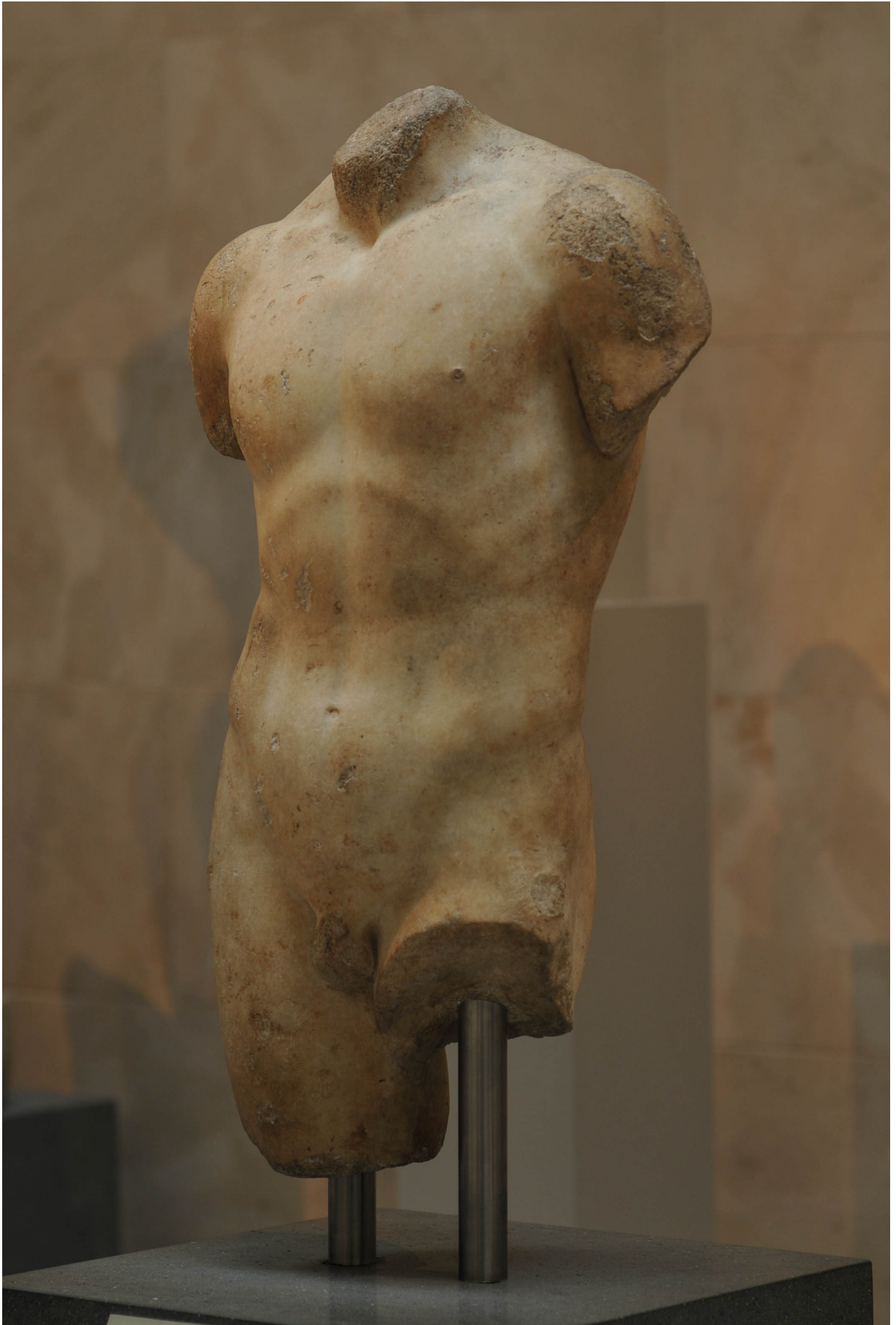


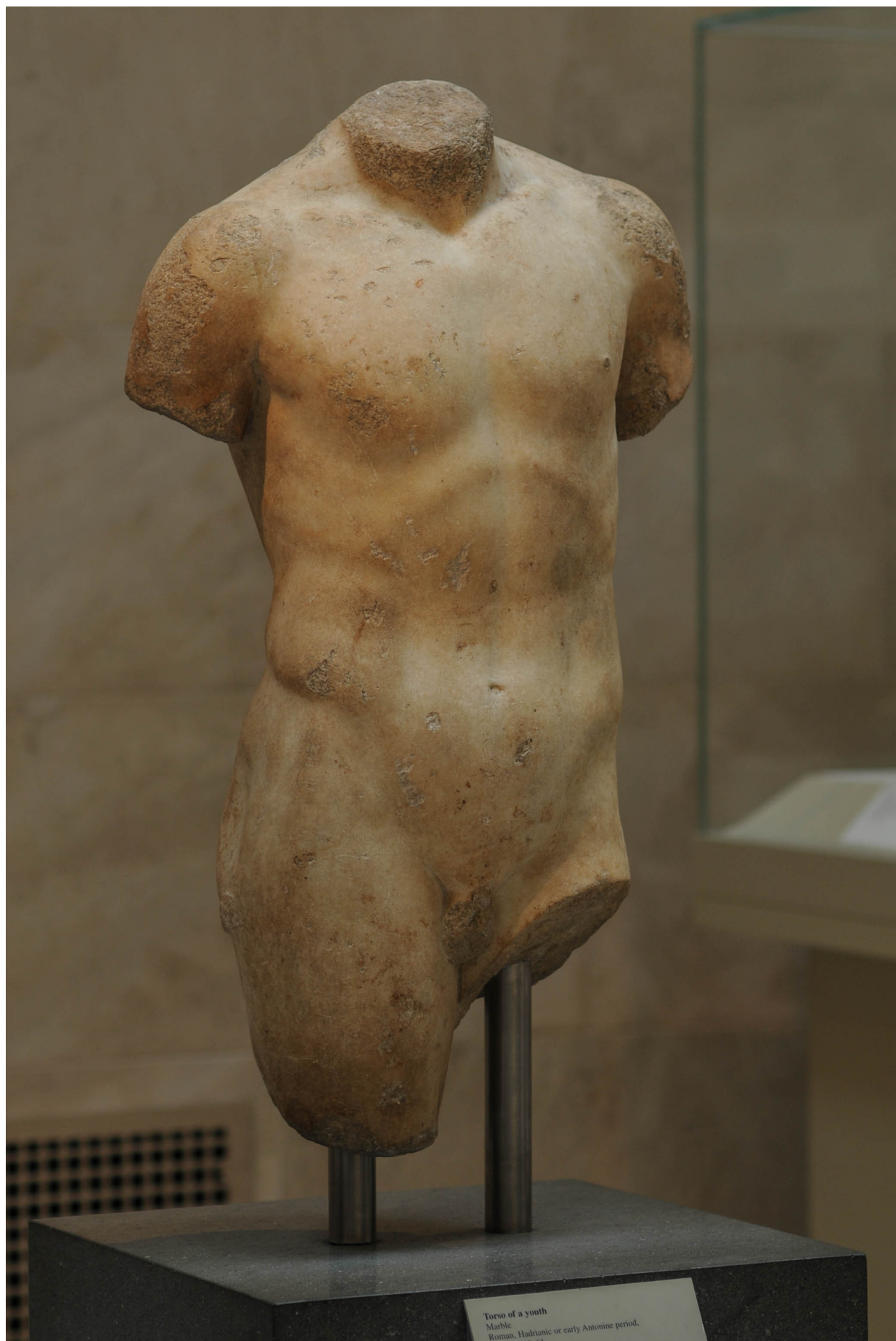












Torso of a youth
Marble
Roman, Hadrianic or early Antonine period.
Inv. 41



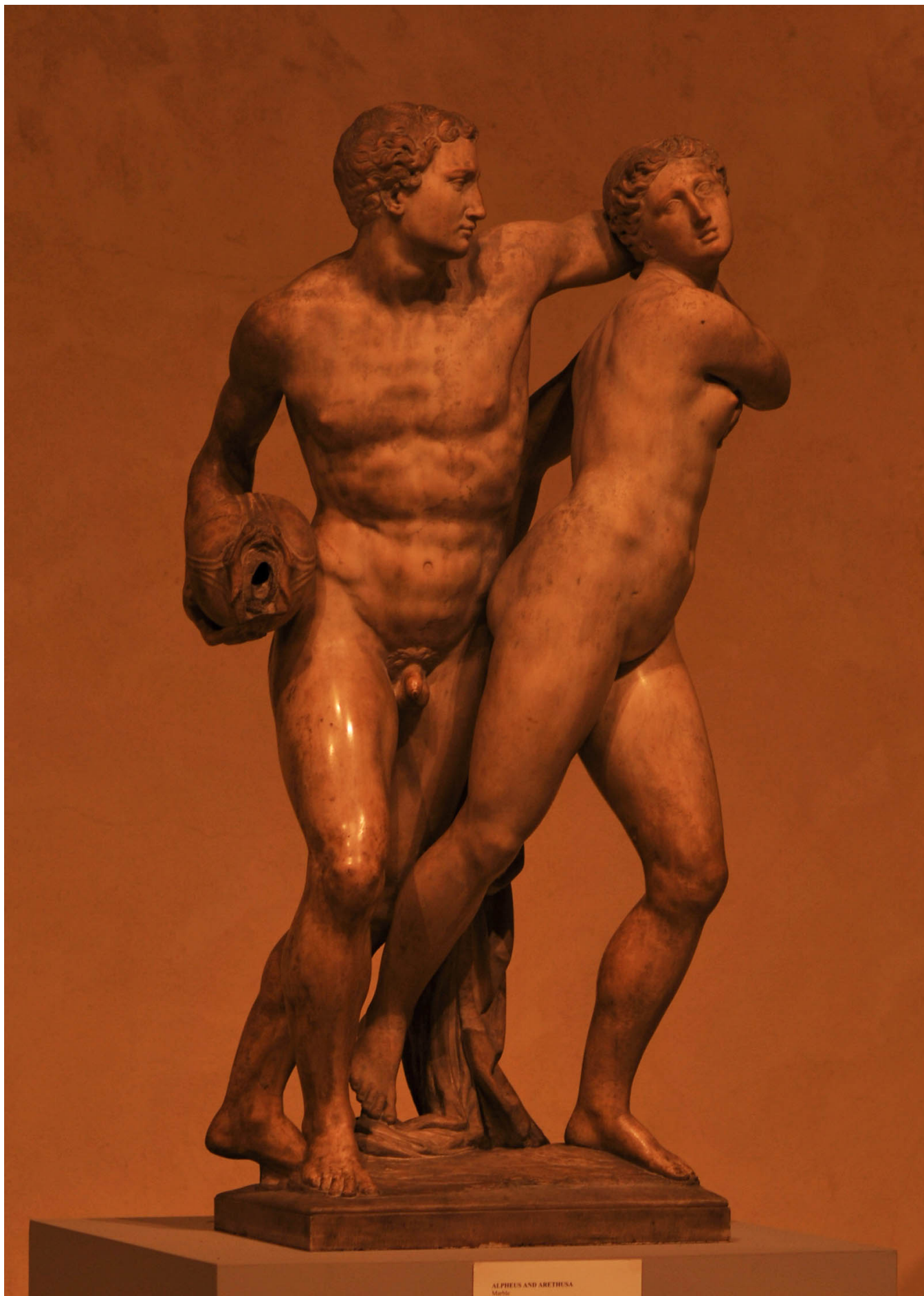
Marble torso of a boy
Roman, imperial period, 1st or 2nd century A.D.
Copy of a Greek statue of ca. 425–400 B.C.
Regina Fund., 1907 (197.206.106)
The torso of a boy



Karl Bitter (1867-1915)

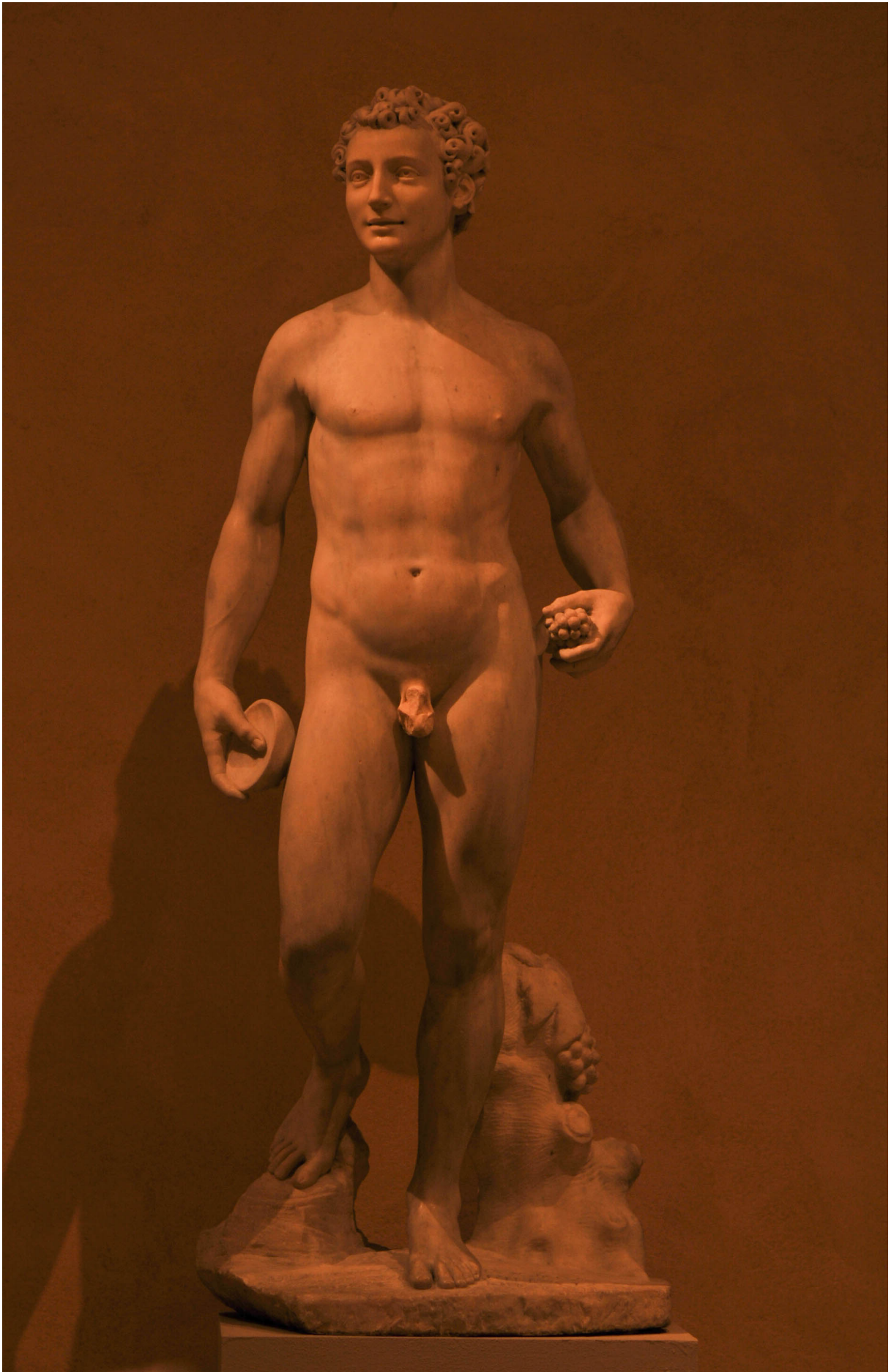


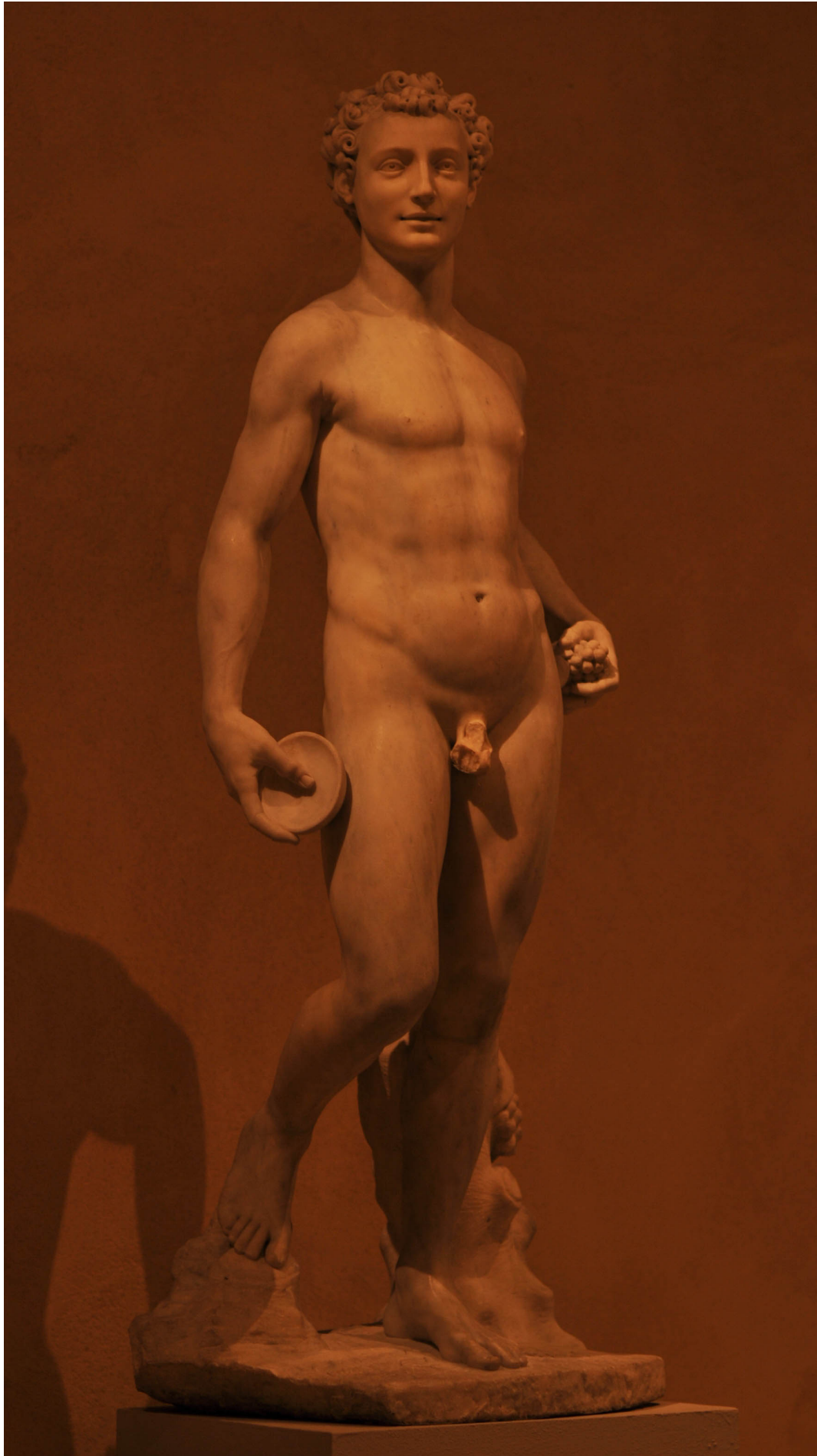


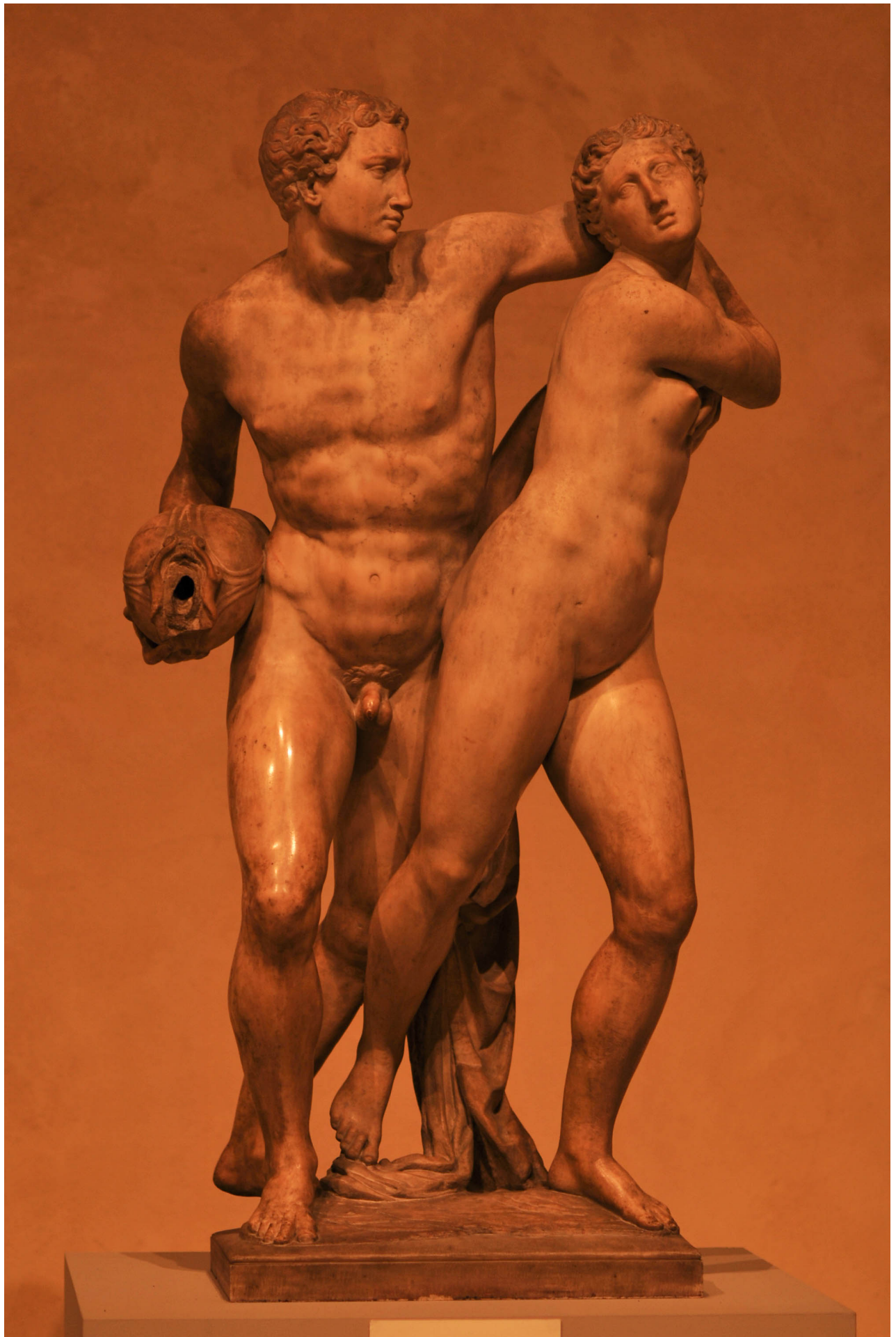


ALPHEUS AND ARETHUSA
Marble, 1780-1781





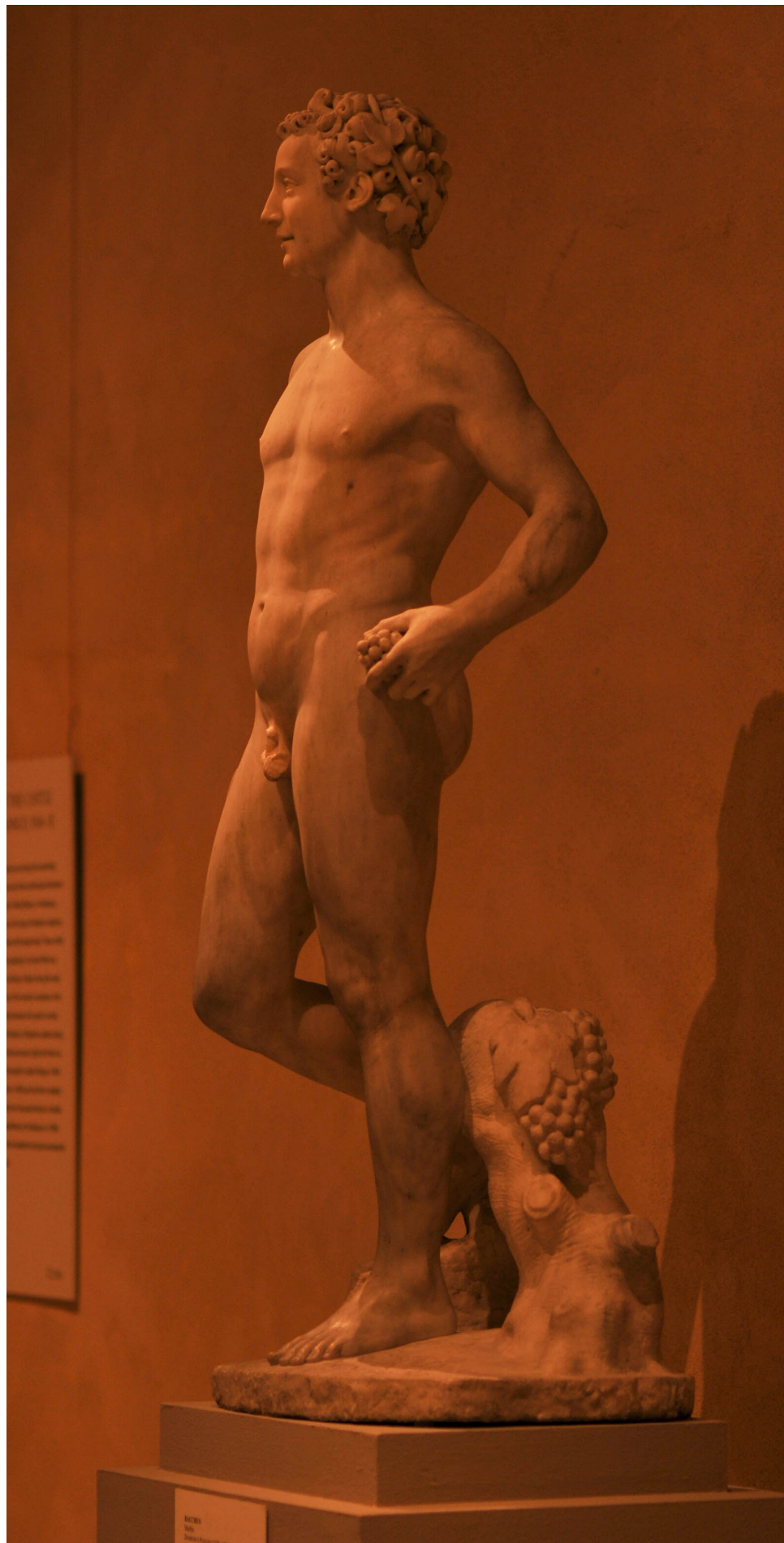






ALPHEUS AND ARETHUSA
Marble
BACCIO BANDINELLI (1527-1592)
Italian (Florence), 1568-70

Alpheus was the river god and Alpheus pursued the







Marble torso of a youth
Roman, Imperial period, 1st or 2nd century A.D.
Copy or adaptation of a Greek original







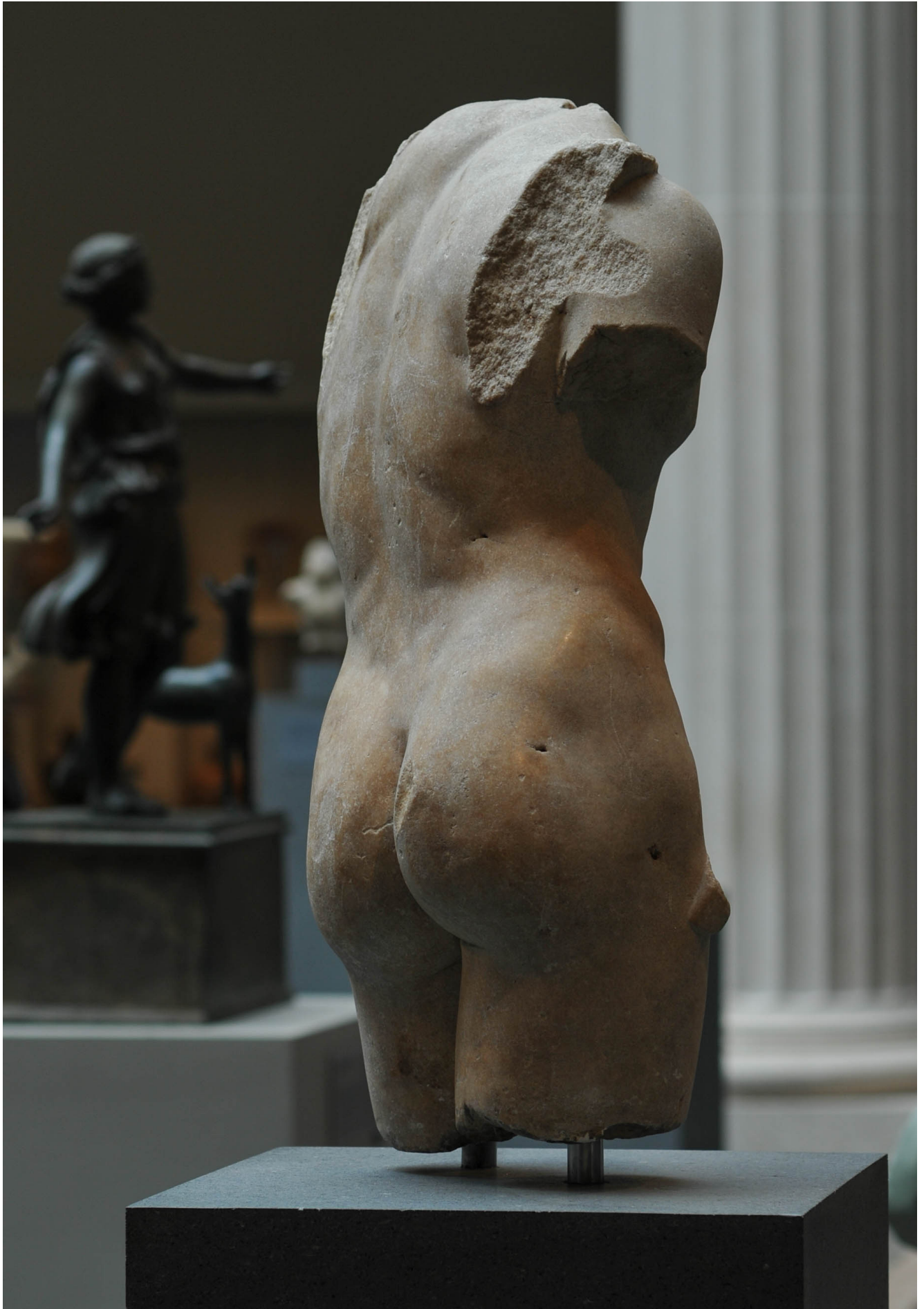




















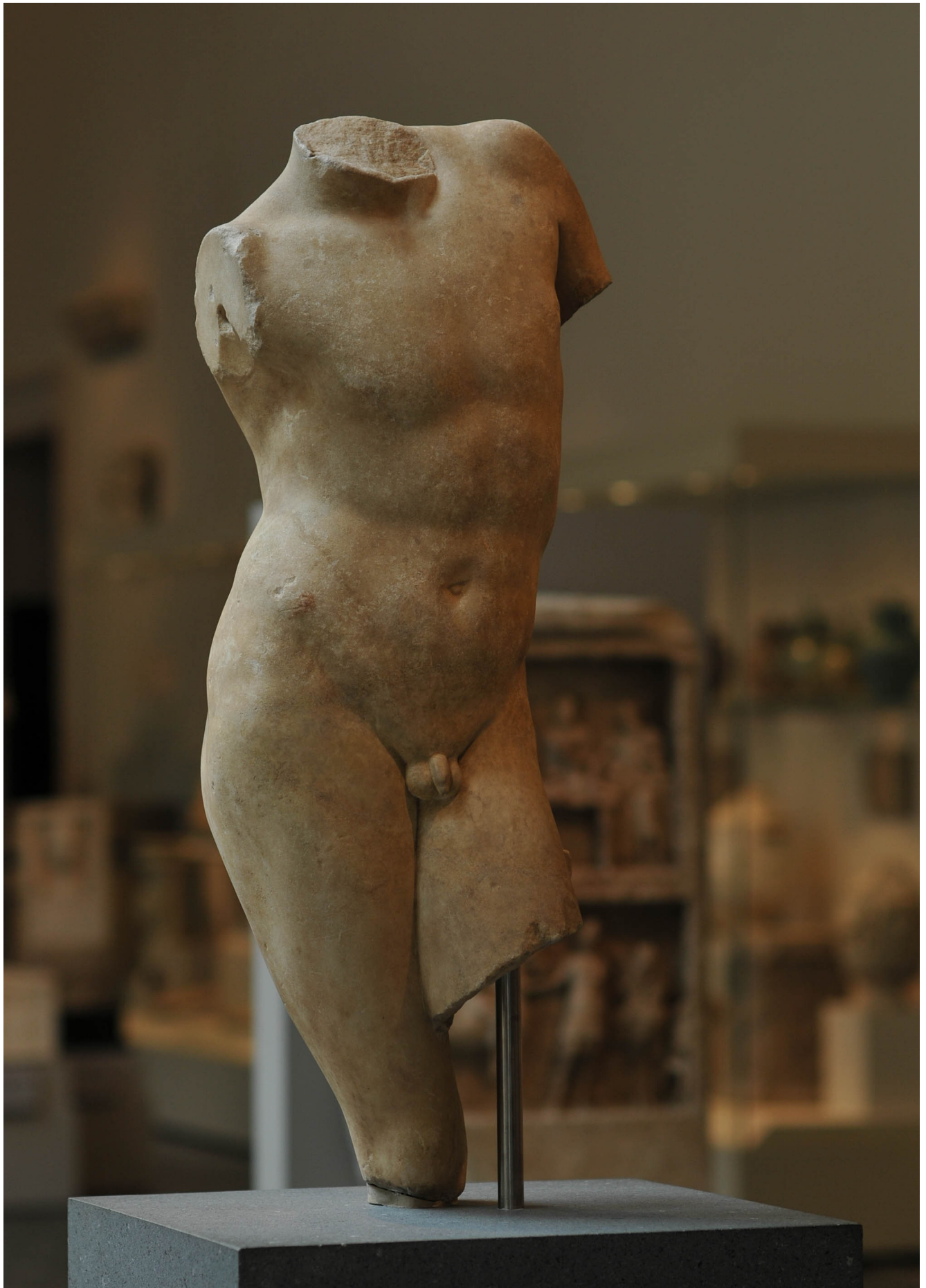
Martin torso of a youth

Roman, Imperial period, 1st or 2nd century A.D.
Copy or adaptation of a Greek work of the
5th century B.C.

Museo Nazionale di Roma

The statue, showing part of the youth's legs as well
a female torso of Pheidias, the personification of youth
and beauty, is part of the Roman period.





Figures From The Met

PHOTOGRAPHED BY MATTHEW ARCHAMBAULT

For more photo reference PDFs just like this one visit

<http://www.drawing-tutorials-online.com>



DrawingTutorialsOnline

We highly recommend printing out two separate prints of whichever photo you choose to work from. Place one photo to the left of your drawing if you are a righty. Place the second photo above your drawing. The closer to your drawing the better.

If your photo reference is placed too far away from your drawing, details will get lost. You do not want to be twisting your neck looking to the left or right too much.

It's okay to work from a monitor, however, it's all about where you place your monitor. Keep your reference photo close to your drawing to avoid neck and eye strain.

When printing out your reference photo we recommend using Premium Presentation Matte Paper by Epson. There is no glare with the matte paper. This in turn will prevent unnecessary eye fatigue.

Look at your photo reference at least fifty percent of the time.

Lastly if you are a member of Drawing Tutorials Online upload your drawing to our Group Coaching Gallery. We would be happy to provide you with a thorough critique.

<http://www.drawing-tutorials-online.com/members/Upload-Your-Work-To-Our-Group-Coaching-Gallery.cfm>